

- 1
- 2
- 3
- 4
- 5
- 6
- 7
- 8
- 9
- 10
- 11
- 12
- 13
- 14
- 15
- 16
- 17
- 18

STANDARD EXECUTIONS

Aluminium, glossy finish:
 - **GN 743.1-A**: with reflector made out of technopolymer (PSU polysulfone).
 - **GN 743.1-B**: without reflector.
 Black anodised aluminium:
 - **GN 743.1-AS**: with reflector made out of technopolymer (PSU polysulfone).
 - **GN 743.1-BS**: without reflector.

WINDOW

ESG safety glass.

RING

FKM type VITON®*.

MAXIMUM CONTINUOUS WORKING TEMPERATURE

180°C.

FEATURES AND APPLICATIONS

GN 743.1 oil level indicators can be used on pressurised oil tanks (oil-proof resistance data available on request).

ACCESSORIES ON REQUEST

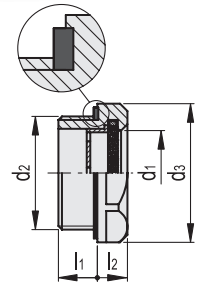
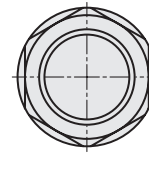
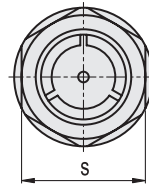
Brass nuts GH. (see page 1746) (with Gas threadings only) for fitting to reservoirs with wall thickness smaller than 5 mm.

* Registered trademark by DuPont Dow Elastomers.



GN 743.1-A
GN 743.1-AS

GN 743.1-B
GN 743.1-BS



Conversion Table			
1 mm = 0,039 inch			
d1			
mm	inch	mm	inch
7	0.28	18	0.71
11	0.43	24	0.94
14	0.55	32	1.26

GN 743.1-A

GN 743.1-AS

Code	Description	Code	Description	d1	d2	d3	l1	l2	s	⚖️
GN.37700	GN 743.1-7-M14X1,5-A	GN.72106	GN 743.1-7-M14X1,5-AS	7	M14X1,5	20	7.5	6.5	18	7
GN.37701	GN 743.1-11-M16x1,5-A	GN.72116	GN 743.1-11-M16X1,5-AS	11	M16x1,5	22	8	7.5	20	8
GN.37703	GN 743.1-14-M20x1,5-A	GN.72126	GN 743.1-14-M20X1,5-AS	14	M20x1,5	26	8.5	7.5	23	10
GN.37705	GN 743.1-18-M26x1,5-A	GN.72136	GN 743.1-18-M26X1,5-AS	18	M26x1,5	32	9	8	30	18
GN.37707	GN 743.1-18-M27x1,5-A	GN.72138	GN 743.1-18-M27X1,5-AS	18	M27x1,5	32	9	8	30	18
GN.37709	GN 743.1-24-M33x1,5-A	GN.72146	GN 743.1-24-M33X1,5-AS	24	M33x1,5	40	11	8.5	36	26
GN.37711	GN 743.1-32-M40x1,5-A	GN.72156	GN 743.1-32-M40X1,5-AS	32	M40x1,5	50	12	9	46	39
GN.37713	GN 743.1-32-M42x1,5-A	GN.72158	GN 743.1-32-M42X1,5-AS	32	M42x1,5	50	12	9	46	43
GN.37714	GN 743.1-7-G1/4-A	GN.72101	GN 743.1-7-G1/4-AS	7	G 1/4	20	7.5	6.5	18	8
GN.37715	GN 743.1-11-G3/8-A	GN.72111	GN 743.1-11-G3/8-AS	11	G 3/8	22	8	7.5	20	9
GN.37717	GN 743.1-14-G1/2-A	GN.72121	GN 743.1-14-G1/2-AS	14	G 1/2	26	8.5	7.5	23	11
GN.37719	GN 743.1-18-G3/4-A	GN.72131	GN 743.1-18-G3/4-AS	18	G 3/4	32	9	8	30	18
GN.37721	GN 743.1-24-G1-A	GN.72141	GN 743.1-24-G1-AS	24	G 1	40	11	8.5	36	26
GN.37723	GN 743.1-32-G1¼-A	GN.72153	GN 743.1-32-G1¼-AS	32	G 1 1/4	50	12	9	46	42
GN.37725	GN 743.1-32-G1½-A	GN.72151	GN 743.1-32-G1½-AS	32	G 1 1/2	60	13	9	55	45

GN 743.1-B

GN 743.1-BS

Code	Description	Code	Description	d1	d2	d3	l1	l2	s	⚖️
GN.37730	GN 743.1-7-M14X1,5-B	GN.72107	GN 743.1-7-M14X1,5-BS	7	M14X1,5	20	7.5	6.5	18	7
GN.37731	GN 743.1-11-M16x1,5-B	GN.72117	GN 743.1-11-M16X1,5-BS	11	M16x1,5	22	8	7.5	20	8
GN.37733	GN 743.1-14-M20x1,5-B	GN.72127	GN 743.1-14-M20X1,5-BS	14	M20x1,5	26	8.5	7.5	23	10
GN.37735	GN 743.1-18-M26x1,5-B	GN.72137	GN 743.1-18-M26X1,5-BS	18	M26x1,5	32	9	8	30	18
GN.37737	GN 743.1-18-M27x1,5-B	GN.72139	GN 743.1-18-M27X1,5-BS	18	M27x1,5	32	9	8	30	18
GN.37739	GN 743.1-24-M33x1,5-B	GN.72147	GN 743.1-24-M33X1,5-BS	24	M33x1,5	40	11	8.5	36	26
GN.37741	GN 743.1-32-M40x1,5-B	GN.72157	GN 743.1-32-M40X1,5-BS	32	M40x1,5	50	12	9	46	39
GN.37743	GN 743.1-32-M42x1,5-B	GN.72159	GN 743.1-32-M42X1,5-BS	32	M42x1,5	50	12	9	46	43
GN.37744	GN 743.1-7-G1/4-B	GN.72102	GN 743.1-7-G1/4-BS	7	G 1/4	20	7.5	6.5	18	8
GN.37745	GN 743.1-11-G3/8-B	GN.72112	GN 743.1-11-G3/8-BS	11	G 3/8	22	8	7.5	20	9
GN.37747	GN 743.1-14-G1/2-B	GN.72122	GN 743.1-14-G1/2-BS	14	G 1/2	26	8.5	7.5	23	11
GN.37749	GN 743.1-18-G3/4-B	GN.72132	GN 743.1-18-G3/4-BS	18	G 3/4	32	9	8	30	18
GN.37751	GN 743.1-24-G1-B	GN.72142	GN 743.1-24-G1-BS	24	G 1	40	11	8.5	36	26
GN.37753	GN 743.1-32-G1¼-B	GN.72154	GN 743.1-32-G1¼-BS	32	G 1 1/4	50	12	9	46	42
GN.37727	GN 743.1-32-G1½-B	GN.72152	GN 743.1-32-G1½-BS	32	G 1 1/2	60	13	9	55	45

Accessories for hydraulic systems